

Fellowships for Visual Artists

CALIFORNIA COMMUNITY FOUNDATION



Rheim Alkadhi **10**



Edgar Arceneaux **12**



Andrea Bowers **14**



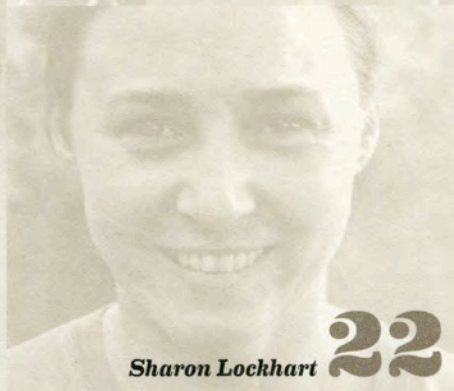
Juan Capistran **16**



Sara Daleiden **18**



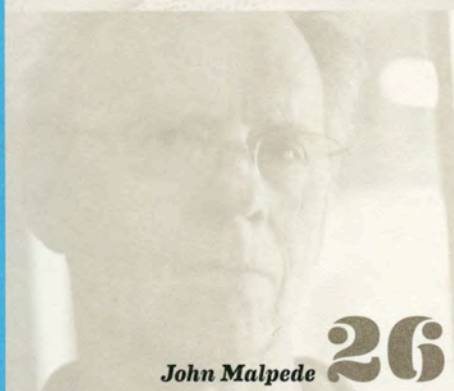
Zackary Drucker **20**



Sharon Lockhart **22**



Euan Macdonald **24**



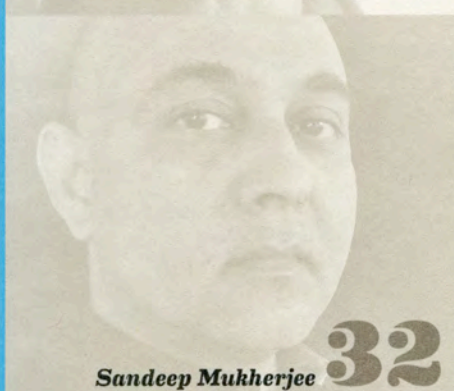
John Malpede **26**



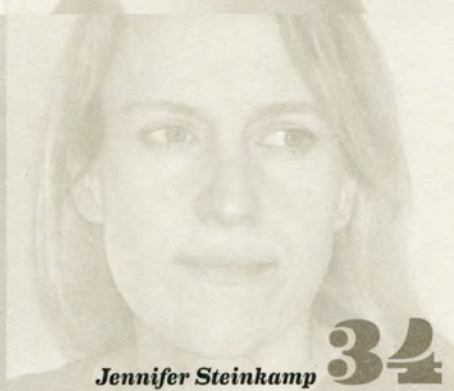
Elana Mann **28**



Mineo Mizuno **30**



Sandeep Mukherjee **32**



Jennifer Steinkamp **34**



Pae White **36**

Adam Overton
Aiste Ptakauske
Ana Fernandez
Bruce Conkle
CamLab
Chan & Mann
Danielle Adair
Dorit Cypis
Elana Mann
Emery Martin
Eric Lindley
Ernesto Salmeron
Eva Jung
Jason Kunkle
Jean Pierre Lapeyre
Julie Lequin
Karen Atkinson
Kelly Kleinschrodt
Kevin Jamieson
Glynn
Iyanova
Iezar Boyadjiev
Ile Colbert
Iarc Lewis
Iarssares
Melissa Wyman
Michael Lazar
Pablo Rasgado
REP
Rui Costa
Sara Roberts
Sibyl O'Malley
Soren Thilo Funder
Stine Marie Jacobsen
Vincent Ramos
Zackary Drucker

A PROJECT BY
ELANA MANN





Elana Mann

“Every gesture, encounter and social act contains invisible performances related to gender, power and nationality,” says multimedia artist Elana Mann. “My artwork highlights and probes the theatricality of human interactions and the potential of exchange.” Her interests are in the realm of the social and the political as well as the cultural; as such, Mann’s practice ranges from producing sculpture, video and performance to organizing international exhibitions, pedagogical activities and various discursive programs. Many of her projects, regardless of discipline or approach, rely on collaborations with other artists as well as audience, highlighting an aesthetic of relational engagement.

One recent project, *Exchange Rate: 2008* (2008), was an international performance exchange organized by Mann in response to the most recent U.S. presidential election. Nearly 40 artists living in 16 different countries produced instructions for performances related to the election campaign, exchanged them through a dedicated Web site and interpreted them through live action in remote locations around the globe. This project insinuated itself into public spaces through a virtual and physical presence by creating a platform for the public perspectives of global stakeholders not allowed to vote in the election, but nonetheless affected by it. *Retirement Bash* (2009) was another collaborative, participatory performance; Mann and students at a Los Angeles-area high school held a five-week workshop that included learning about art, engaging in community outreach and conducting in-class group experiments. It culminated in a three-hour interactive event in which outdated symbols, images and mottoes were, through performance, “retired” by the students, while new sayings and ideas were introduced. Mann exploits language and dialogue as tools for artistic expression, enhanced social relations and political transformation.